



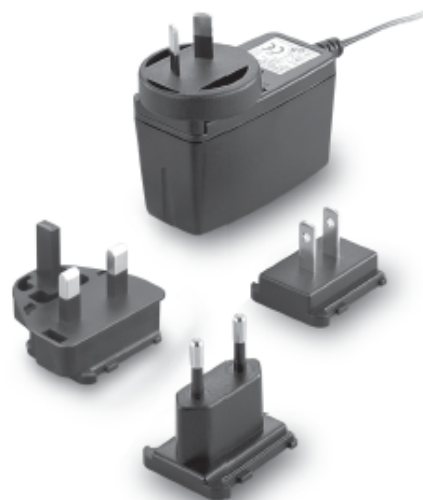
TRG10R SERIES

10W SWITCHING ADAPTER



Features

- * Universal Input: 90~264Vac
- * Interchangeable AC Plugs
- * Meets EN55022 Class "B" and CISPR/FCC Class B
- * Continuous Short Circuit Protection
- * Over Voltage Protection
- * Meet CoC Tier 2 & DoE Level VI
(Output cable length \leq 1800mm)
- * No Load Power Consumption < 75mW



Ordering information

TRG10RXXX - XX	E	XX
Model No.	DC Plug Type	OVP DC Cable Length and Type
		01: 720mm
		02: 1220mm
		03: 1800mm
		11: 720mm with Ferrite Core
		12: 1220mm with Ferrite Core
		13: 1800mm with Ferrite Core
		* 18AWG / UL1185

MODEL	OUTPUT VOLTAGE	OUTPUT CURRENT	RIPPLE & NOISE NOTE 1	VOLTAGE ACCURACY NOTE 2	LINE REGULATION NOTE 3	LOAD REGULATION NOTE 4	AVERAGE EFFICIENCY min. NOTE 5
TRG10R050	5V	1.6A	50mVp-p	±2%	±1%	±4%	77.37%
TRG10R059	5.9V	1.5A	1%	±2%	±1%	±3%	78.12%
TRG10R060	6V	1.5A	1%	±2%	±1%	±3%	81.57%
TRG10R075	7.5V	1.2A	1%	±2%	±1%	±3%	81.57%
TRG10R090	9V	1.1A	1%	±2%	±1%	±2%	82.14%
TRG10R120	12V	0.85A	1%	±2%	±1%	±2%	82.32%
TRG10R136	13.6V	0.75A	1%	±2%	±1%	±2%	82.32%
TRG10R150	15V	0.7A	1%	±2%	±1%	±2%	82.49%
TRG10R180	18V	0.55A	1%	±2%	±1%	±2%	82.14%
TRG10R240	24V	0.4A	1%	±2%	±1%	±2%	81.96%

Specifications are subject to change without notice.

Specifications

INPUT SPECIFICATIONS:

Voltage 90~264Vac
 Frequency 47 to 63Hz
 Input Current 0.4A max.
 Inrush Current Cold Start @25°C 40A max. @ 240Vac
 Leakage Current 0.25mA max

OUTPUT SPECIFICATIONS:

Holdup Time 10mS typ. @115Vac
 Short Circuit Protection Continuous(Auto Recovery)
 Over Voltage Protection TVS Component to Clamp
 Temperature Coefficient ±0.05%/°C

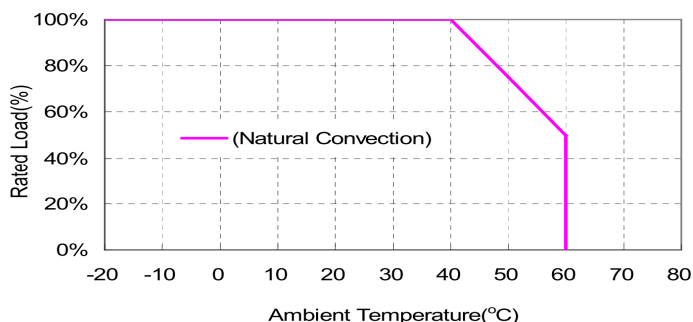
GENERAL SPECIFICATIONS:

Isolation Input to output = 4,242VDC
 Operating Temperature -20 ~ 60°C (see Derating Curve)
 Storage Temperature -20~85°C
 Humidity 93% RH max. Non condensing
 Cooling Natural Convection
 Switching Frequency 67KHz typ.
 MTBF MIL-HDBK-217F, GB, 25°C/115VAC 200K hrs min.
 Altitude 2000m
 Dimensions 2.858x1.823x1.402Inches (72.6x46.3x35.6mm)
 Weight 130g(0.29 Pounds)

SAFETY AND EMC:

Emission and Immunity EN55022 Class B, FCC Part 15 Class B
 EN61000-6-3, EN61000-3-2, EN61000-3-3
 EN55024, EN61204-3, EN61000-6-1
 Safety Class II, IEC60950-1, EN60950-1, UL60950-1

TRG10R Series Derating Curve

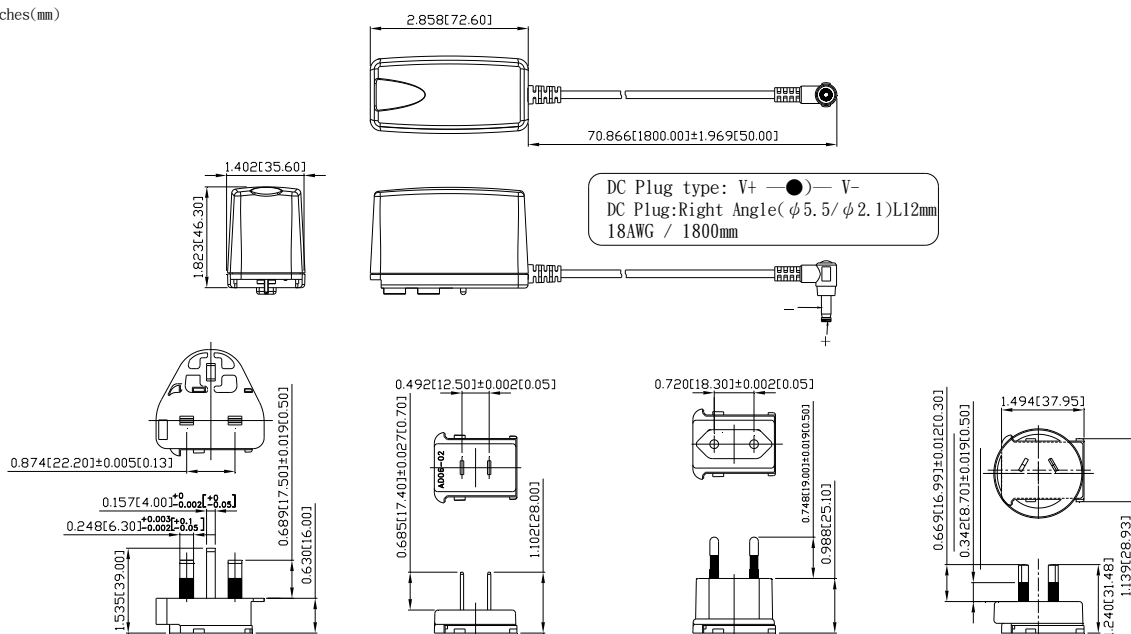


NOTE:

1. Add a 0.1uF ceramic capacitor and a 10uF E.L. capacitor to output for Ripple & Noise measuring @20MHz BW.
2. Voltage setpoint at 60% full load.
3. Line regulation measured from 100Vac to 240Vac full load.
4. Load regulation measured from 60% to full load and from 60% to 20% load (60% +/- 40% load).
5. Average Efficiency measured at 25%,50%,75%,100% load and input voltage is 115Vac / 230Vac.

Mechanical Specification

All Dimensions are in inches(mm)
 Tolerance: Inches: X.XXX±0.02
 Millimeters: X.XX±0.5
 UNIT: inches(mm)



Typical at 25°C, nominal line and 75% load, unless otherwise Specified

Mouser Electronics

Authorized Distributor

Click to View Pricing, Inventory, Delivery & Lifecycle Information:

Cincon:

[TRG10R050-11E03-Level-VI](#) [TRG10R050-48E03-Level-VI](#) [TRG10R059-01E03-Level-VI](#) [TRG10R120-49E03-Level-VI](#) [TRG10R150-12E03-Level-VI](#) [TRG10R120-11E03-Level-VI](#) [TRG10R180-01E03-Level-VI](#) [TRG10R240-11E03-Level-VI](#) [TRG10R240-49E03-Level-VI](#) [TRG10R120-12E03-Level-VI](#) [TRG10R120-01E03-Level-VI](#) [TRG10R120-02E03-Level-VI](#) [TRG10R060-11E03-Level-VI](#) [TRG10R090-01E03-Level-VI](#) [TRG10R090-11E03-Level-VI](#) [TRG10R050-36E03-Level-VI](#) [TRG10R090-02E03-Level-VI](#) [TRG10R240-36E03-Level-VI](#) [TRG10R240-12E03-Level-VI](#) [TRG10R050-40E03-Level-VI](#) [TRG10R075-11E03-Level-VI](#) [TRG10R240-02E03-Level-VI](#) [TRG10R150-01E03-Level-VI](#) [TRG10R240-40E03-Level-VI](#) [TRG10R059-12E03-Level-VI](#) [TRG10R150-02E03-Level-VI](#) [TRG10R150-11E03-Level-VI](#) [TRG10R075-02E03-Level-VI](#) [TRG10R050-39E03-Level-VI](#) [TRG10R059-02E03-Level-VI](#) [TRG10R060-12E03-Level-VI](#) [TRG10R120-40E03-Level-VI](#) [TRG10R136-02E03-Level-VI](#) [TRG10R050-12E03-Level-VI](#) [TRG10R060-01E03-Level-VI](#) [TRG10R060-02E03-Level-VI](#) [TRG10R180-02E03-Level-VI](#) [TRG10R136-12E03-Level-VI](#) [TRG10R075-12E03-Level-VI](#) [TRG10R050-35E03-Level-VI](#) [TRG10R075-01E03-Level-VI](#) [TRG10R120-36E03-Level-VI](#) [TRG10R136-01E03-Level-VI](#) [TRG10R136-11E03-Level-VI](#) [TRG10R240-35E03-Level-VI](#) [TRG10R120-35E03-Level-VI](#) [TRG10R180-11E03-Level-VI](#) [TRG10R050-02E03-Level-VI](#) [TRG10R240-48E03-Level-VI](#) [TRG10R090-12E03-Level-VI](#) [TRG10R240-39E03-Level-VI](#) [TRG10R240-01E03-Level-VI](#) [TRG10R120-39E03-Level-VI](#) [TRG10R059-11E03-Level-VI](#) [TRG10R050-01E03-Level-VI](#) [TRG10R050-49E03-Level-VI](#) [TRG10R120-48E03-Level-VI](#)